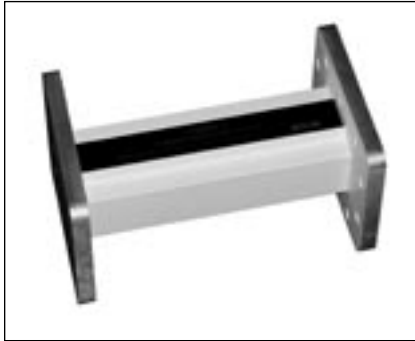


Special Applications

Satcom Transmit/Reject Filters

Series 12086



The series 12086 is a family of transmit rejection filters specifically addressing the SATCOM (C-band) market. The device is installed between the antenna and the LNA in the receive segment of satellite earth terminals. It is also used in C-band transceiver applications to isolate up-link and down-link signals.

The unit offers extremely low loss, typically less than 0.04 dB on the receive signals, while providing a high degree of transmit rejection, ranging from 50 to 80 dB, depending upon the model. The construction of these units is 100% dip brazed aluminum with a military grade chromate finish. This allows for years of high performance operation. Optional paint and label configurations are available for OEM requirements. All units come standard with WR-229 grooved flanges, with alternate configurations available upon request.

Model	Waveguide Size	Frequency (GHz)	Insertion Loss (Max)	VSWR (Max)	Reject (GHz)	Attenuation (Min)
12086-1	WR-229	3.7 - 4.2	0.04 dB	1.15:1	5.925 - 6.425	50 dB
12086XR-1	WR-229	3.7 - 4.2	0.04 dB	1.25:1	5.925 - 6.425	80 dB
12086-2	WR-229	3.625 - 4.2	0.04 dB	1.15:1	5.850 - 6.425	70 dB
12086XR-2	WR-229	3.625 - 4.2	0.04 dB	1.25:1	5.850 - 6.425	80 dB
12086-3	WR-229	3.4 - 4.2	0.04 dB	1.25:1	5.850 - 6.425	70 dB
12086XR-3	WR-229	3.4 - 4.2	0.04 dB	1.25:1	5.850 - 6.425	80 dB

Location of Potential 4 GHz Interfering Carriers

Center Frequency** Transponder	Possible TI Carrier	Center Frequency** Transponder	Possible TI Carrier
1-(3720) MHz	3710, 3730 MHz	13-(3960) MHz	3950, 3970 MHz
2-(3740)	3730, 3750	14-(3980)	3970, 3990
3-(3760)	3750, 3770	15-(4000)	3990, 4010
4-(3780)	3770, 3790	16-(4020)	4010, 4030
5-(3800)	3790, 3810	17-(4040)	4030, 4050
6-(3820)	3810, 3830	18-(4060)	4050, 4070
7-(3840)	3830, 3850	19-(4080)	4070, 4090
8-(3860)	3850, 3870	20-(4100)	4090, 4110
9-(3880)	3870, 3890	21-(4120)	4110, 4130
10-(3900)	3890, 3910	22-(4140)	4130, 4150
11-(3920)	3910, 3930	23-(4160)	4150, 4170
12-(3940)	3930, 3950	24-(4180)	4170, 4190

** SATCOM/COMSTAR
24 Transponder Satellites

